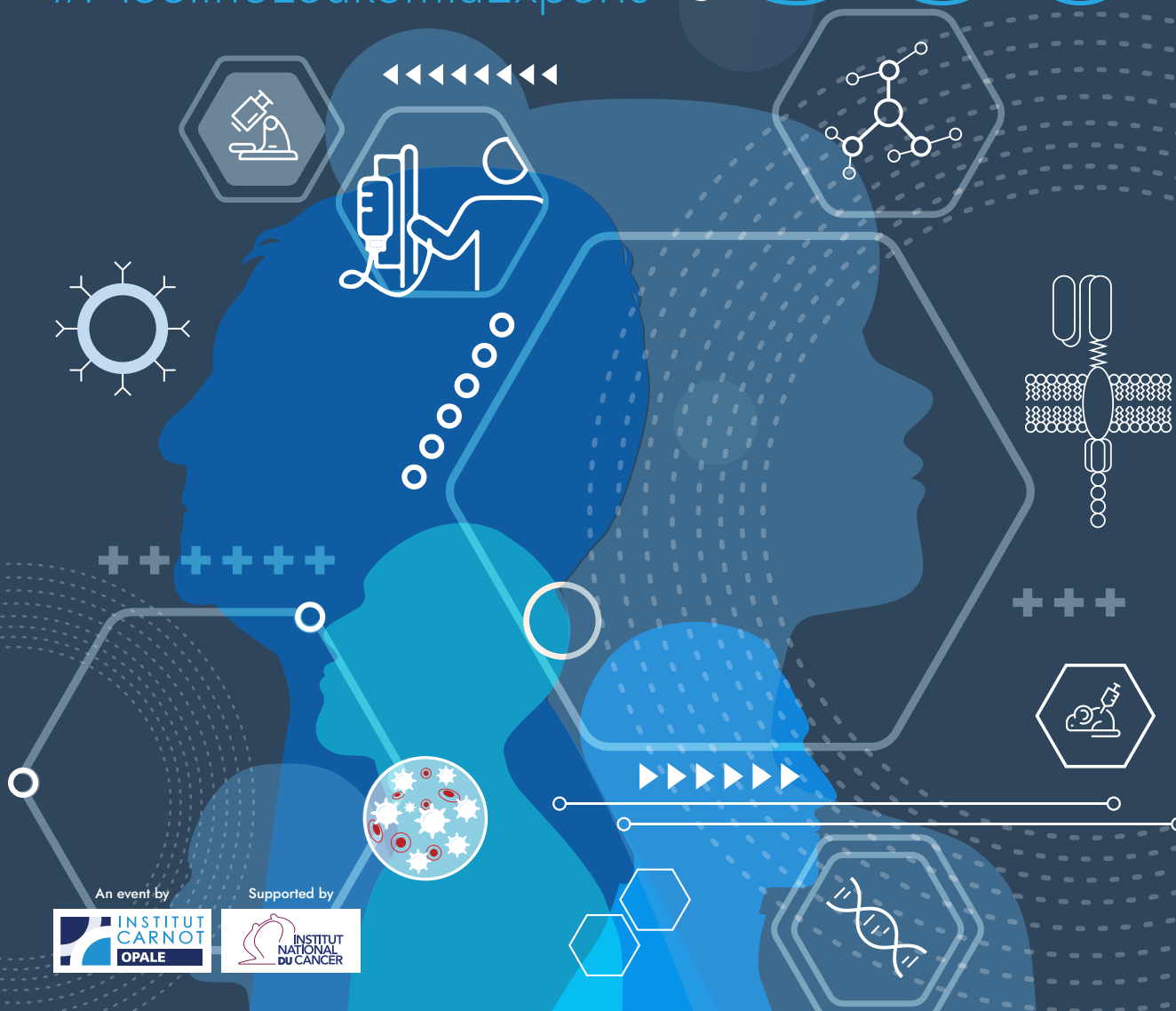


PROGRAM

LEUKEMIA 360

#MeettheLeukemiaExperts



An event by



Supported by



We Advance Science in Haematology



Building on breakthrough science from our labs in Japan,
we are advancing innovative treatments in blood cancers.



Passion for Innovation.
Compassion for Patients.®

Find out more about us.
www.daiichi-sankyo.eu

NOV 13, 2024
PIERRE MENDÈS FRANCE CONFERENCE CENTER
PARIS, FRANCE

SUMMARY

Editorial	5
Synopsis	6
Detailed program	8
....	

DID YOU ACTIVATE YOUR SWAPCARD ACCOUNT YET?
Go to the platform by scanning the QR Code.

With this app, you'll be able to book appointments with other delegates.

You can also:

- Discover the entities' R&D offers
- Go through the program of the event
- Download documents from the virtual briefcase
- Access the list of all the delegates



—————→ leukemia360.org

STRIVING TO ADVANCE BLOOD CANCER CARE
FROM RESEARCH TO REAL LIFE



AstraZeneca's Hematology Ambition is focused on:

ADVANCING
SCIENTIFIC
DISCOVERY

PURSuing
INNOVATIVE
PARTNERSHIPS

OPTIMIZING
PATIENT
OUTCOMES



LEUKEMIA 360

#MeettheLeukemiaExperts

Paris, November 13, 2024

This is the 1st edition of LEUKEMIA 360, a meeting to be organized every year in Paris, France, by OPALE, The Organization for Partnerships in Leukemia. It is gathering for the first time 40+ academic entities who will showcase innovations, scientific offers and R&D capacities with no international equivalent in the field of leukemia and related diseases, overall the deadliest blood cancer and the first childhood cancer.




After hearing the voice of a patient organization, thought scientific opinion leaders from Europe, China and the United States will share their views on hot scientific topics for researchers and developers of therapeutic and diagnostic solutions. Several examples of public-private partnering success stories will be presented by researchers and partner companies to the public. A round table will allow participants to listen to leukemia R&D experts on ways to accelerate together innovation and its market access. OPALE entities representatives will display the institute's R&D offer in interactive satellite sessions. And 1:1 meetings throughout the day will allow the actors (academia, industry, patient representatives, investors, institutions) of this vibrant scientific area and dynamic market to discuss possible collaborations. Other networking opportunities will be available during the meeting.

Welcome!




The Organizing Committee



Wednesday, November 13, 2024 | SYNOPSIS

ROOMS	CONFERENCE ROOM	BLOCH-LAINÉ ROOM
 8:00AM > 9:00AM	DELEGATES ARRIVAL - WELCOMING COFFEE & REGISTRATION	
9:00AM > 9:15AM	WELCOME ADDRESS	//////////////////////////////////// //////////////////////////////////// ////////////////////////////////////
9:15AM > 9:30AM	MANIFESTO: WE THE LEUKEMIA PATIENTS	//////////////////////////////////// //////////////////////////////////// ////////////////////////////////////
9:30AM > 11:00AM	SCIENTIFIC PRESENTATIONS SESSION 1	1 : 1 MEETINGS 30 MINUTES SLOTS
 11:00AM > 11:30AM	COFFEE BREAK AND BOOTH VISIT - NETWORKING	
11:30AM > 1:00PM	SCIENTIFIC PRESENTATIONS SESSION 2	1 : 1 MEETINGS 30 MINUTES SLOTS
 1:00PM > 2:00PM	LUNCH BREAK AND BOOTH VISIT - NETWORKING	
2:00PM > 2:15PM	THE PRESIDENT OF FRANCE'S NATIONAL CANCER INSTITUTE	//////////////////////////////////// //////////////////////////////////// ////////////////////////////////////
2:15PM > 2:40PM	OPALE - THE ORGANIZATION FOR PARTNERSHIPS IN LEUKEMIA	1 : 1 MEETINGS 30 MINUTES SLOTS
2:40PM > 3:00PM	//////////////////////////////////// //////////////////////////////////// ////////////////////////////////////	
3:00PM > 3:50PM	INTERNATIONAL COLLABORATIONS	
3:50PM > 4:10PM	//////////////////////////////////// //////////////////////////////////// ////////////////////////////////////	
4:10PM > 4:55PM	COMPANIES AND OPALE RESEARCH ENTITIES DEVELOPING INNOVATIONS	
4:55PM > 5:15PM	//////////////////////////////////// //////////////////////////////////// ////////////////////////////////////	
5:15PM > 5:45PM	ROUND TABLE - KEYS TO SUCCESSFUL INDUSTRY-ACADEMIA RESEARCH PARTNERSHIPS	
5:45PM > 5:50PM	TAKE HOME MESSAGES	
5:50PM > 7:00PM	APERO AND BOOTH VISIT - NETWORKING	

Wednesday, November 13, 2024 | SYNOPSIS

	ROOMS	1, 2 & 3 ROOMS	HALL
	8:00AM > 9:00AM	DELEGATES ARRIVAL - WELCOMING COFFEE & REGISTRATION	
	9:00AM > 9:15AM	//////////////////////////////////// //////////////////////////////////// ////////////////////////////////////	EXHIBITION AND BREAKS AREA
	9:15AM > 9:30AM	//////////////////////////////////// //////////////////////////////////// ////////////////////////////////////	
	9:30AM > 11:00AM	//////////////////////////////////// //////////////////////////////////// //////////////////////////////////// //////////////////////////////////// //////////////////////////////////// ////////////////////////////////////	
	11AM > 11:30AM	COFFEE BREAK AND BOOTH VISIT - NETWORKING	
	11:30AM > 1:00PM	//////////////////////////////////// //////////////////////////////////// //////////////////////////////////// //////////////////////////////////// //////////////////////////////////// ////////////////////////////////////	EXHIBITION AND BREAKS AREA
	1:00PM > 2:00PM	LUNCH BREAK AND BOOTH VISIT - NETWORKING	
	2:00PM > 2:15PM	//////////////////////////////////// //////////////////////////////////// ////////////////////////////////////	EXHIBITION AND BREAKS AREA
	2:15PM > 2:40PM	//////////////////////////////////// //////////////////////////////////// ////////////////////////////////////	
	2:40PM > 3:00PM	R&D OFFER	
	3:00PM > 3:50PM	//////////////////////////////////// //////////////////////////////////// ////////////////////////////////////	
	3:50PM > 4:10PM	R&D OFFER	
	4:10PM > 4:55PM	//////////////////////////////////// //////////////////////////////////// ////////////////////////////////////	
	4:55PM > 5:15PM	R&D OFFER	
	5:15PM > 5:45PM	//////////////////////////////////// //////////////////////////////////// ////////////////////////////////////	
	5:45PM > 5:50PM	//////////////////////////////////// //////////////////////////////////// ////////////////////////////////////	
	5:50PM > 7:00PM	APERO AND BOOTH VISIT - NETWORKING	

LEUKEMIA360 ► Wednesday, Nov.13, 2024

— AM PROGRAM

8:00AM > 9:00AM
DELEGATES
ARRIVAL /
WELCOMING
COFFEE

EXHIBITION
AND BREAKS
AREA

All the sessions on Wednesday November 13, 2024 will be moderated by Alison Munro.

9:00AM > 9:15AM | CONFERENCE ROOM | **WELCOME ADDRESS**

Hervé Dombret, Institut Carnot OPALE, and Virginie Gandemer, Société Française de lutte contre les Cancers et les leucémies de l'Enfant et de l'adolescent (Paris, France)

9:15AM > 9:30AM | CONFERENCE ROOM | **MANIFESTO: WE THE LEUKEMIA PATIENTS**

Stéphanie Fugain, Association Laurette Fugain (Paris, France)

9:30AM > 11:00AM | CONFERENCE ROOM | **SCIENTIFIC PRESENTATIONS SESSION 1**

9:30am > 10:00am

Leukemia response to therapeutic stresses. Hugues de Thé, U944, THEMA Saint-Louis Institute (Paris, France)

10:00am > 10:30am

Use of MRD in AML: treatment stratifying tool, trial endpoint? Sylvie Freeman, University of Birmingham (Birmingham, UK)

10:30am > 11:00am

New immunotherapies versus transplantation in leukemia. Robert Zeiser, University of Freiburg (Freiburg, Germany)

11:00AM > 11:30AM
COFFEE BREAK
AND BOOTH
VISIT -
NETWORKING

EXHIBITION
AND BREAKS
AREA

11:30AM > 1:00PM | CONFERENCE ROOM | **SCIENTIFIC PRESENTATIONS SESSION 2**

11:30am > 12:00pm

BCL-2 inhibition: resistance and combinations. Marina Konopleva, Montefiore Einstein Cancer Center (New York, USA)

12:00pm > 12:30pm

Metabolic resistance in leukemia. Jean-Emmanuel Sarry, Centre de Recherches en Cancérologie (Toulouse, France)

12:30pm > 1:00pm

Drugable targets in myeloproliferative neoplasms. Susanne Isfort, Hannover Medical School (Hannover, Germany)



LEUKEMIA360 ► Wednesday, Nov.13, 2024

— PM PROGRAM

1:00PM > 2:00PM
LUNCH BREAK
AND BOOTH
VISIT -
NETWORKING

EXHIBITION
AND BREAKS
AREA

2:00PM > 2:15PM | CONFERENCE ROOM | **HOW THE NATIONAL CANCER INSTITUTE SUPPORTS FRANCE'S LEADERSHIP IN LEUKEMIA RESEARCH**

Norbert Ifrah, France's National Cancer Institute (Paris, France)

2:15PM > 2:40PM | CONFERENCE ROOM | **OPALE, THE ORGANIZATION FOR PARTNERSHIPS IN LEUKEMIA**

Pascal Deschaseaux, Institut Carnot OPALE (Paris, France)

2:40PM > 3:00PM | ROOMS 1 AND 2 | **R&D OFFERS**

3:00PM > 3:50PM | CONFERENCE ROOM | **INTERNATIONAL COLLABORATIONS**

3:00pm > 3:25pm

The Dana-Farber Cancer Institute: model and partner for OPALE's international clinical and translational leukemia projects? Richard Stone, Dana-Farber Cancer Institute (Boston, USA)

3:25pm > 3:50pm

The Paris-Shanghai Hematology Gateway: past and future of an exemplary collaboration in the leukemia field. Yang Shen, Shanghai Institute of Hematology (Shanghai, China)

3:50PM > 4:10PM | ROOMS 1 AND 2 | **R&D OFFERS**

4:10PM > 4:55PM | CONFERENCE ROOM | **PITCHES: 3 EXAMPLES OF COMPANIES AND OPALE RESEARCH ENTITIES DEVELOPING INNOVATIONS TOGETHER IN THE LEUKEMIA FIELD**

4:10pm > 4:25pm

The blood and bone marrow optical twin. Jacques Klossa (Tribvn) and François Delhommeau (UMR938)

4:25pm > 4:40pm

Contribution to the preclinical development of a new CAR-T cell therapy. Edouard De Dreuzy (Advesya) and Raphaël Itzykson (U944/ALFA)

4:40pm > 4:55pm

Comprehensive development of a novel targeted AML treatment. Patrick Therasse (Servier) and Stéphane De Botton (Gustave Roussy)

4:55PM > 5:15PM | ROOMS 1 AND 2 | **R&D OFFERS**

5:15PM > 5:45PM | CONFERENCE ROOM | **ROUND TABLE: WHAT ARE THE KEYS TO SUCCESSFUL INDUSTRY-ACADEMIA RESEARCH PARTNERSHIPS IN LEUKEMIA AND RELATED DISEASES?**

André Baruchel (Paris, France), Xavier Morelli (Marseille, France), Rita Vieira, Daiichi Sankyo (Lisbon, Portugal) and Richard Delarue, Beigene (Neuchâtel, Switzerland). Moderator: Pascal Deschaseaux (Paris, France)

5:45PM > 5:50PM | CONFERENCE ROOM | **TAKE HOME MESSAGES**

Hervé Dombret, Institut Carnot OPALE (Paris, France)

5:50PM > 7:00PM | HALL | **APERO AND NETWORKING**





A series of horizontal dotted lines for note-taking on the left page.

A series of horizontal dotted lines for note-taking on the right page.

LEUKEMIA 360 IS ORGANIZED WITH THE SUPPORT OF OUR PARTNERS



LOGISTICS PARTNER

