

2011-2014 CANCEROPOLE INITIATIVE (PROCAN II)

Core Thematic B

**Translational Research – Biomarkers Imaging
technologies
Early phase trials**

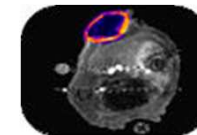
***Pr Pierre FUMOLEAU
(CLCC Georges-François LECLERC, Dijon)***

***Pr Jean-Louis MERLIN
(CLCC Alexis Vautrin, Nancy)***



- Translational Research - Presentation

B



➤ **Overall objectives:**

- Promote the **translation of discoveries issued by local teams** (academic and/or industrial)
- Accelerate the **transfer of innovations to the patient**
- Increase the **participation to clinical trials**

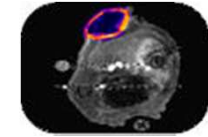
➤ **Strategy:**

- Increase **awareness of available technologies and facilities** (optimized use in attractive protocols)
- Support the **acquisition of cutting edge technologies and strategies**, including Quality of Life approaches
- Promote **exchanges among clinicians and researchers** (COCLIN, Forum, ONCOTRANS)
- Promote **early phase clinical trials**

plans
cancer

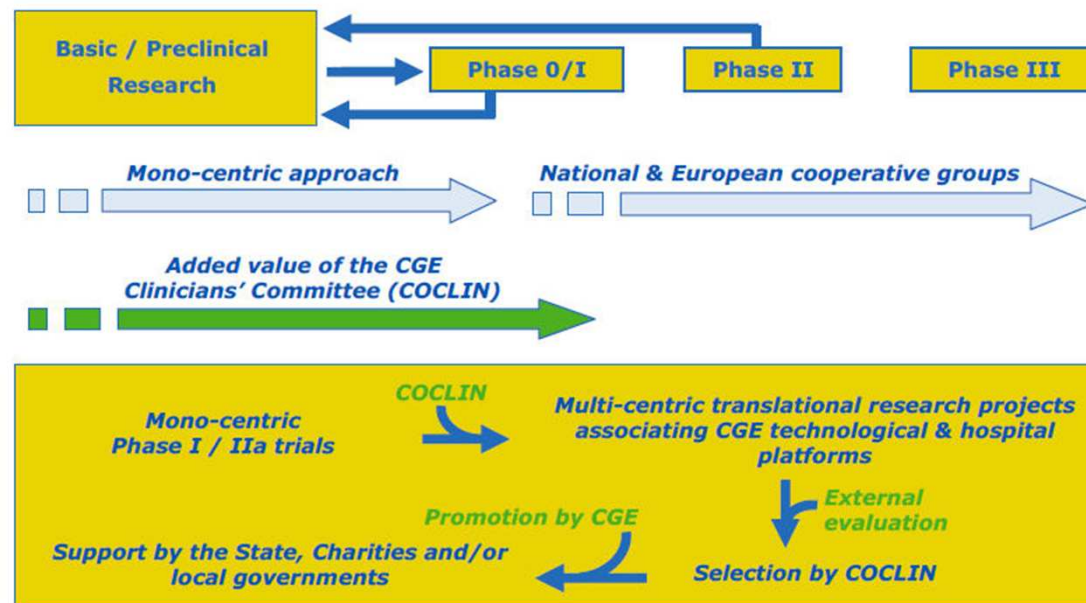
Objectives vs. Plan Cancer

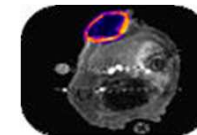
- ⇒ Strengthen translational research (**Actions 1.1, 1.2**)
- ⇒ Support clinical research and increase patient inclusions (**Actions 4.1, 4.2**)
- ⇒ Promote cancer research coordination in connexion with the policy towards comprehensive cancer research centres (**Action 5.2**)
- ⇒ Assist pathology departments integration of scientific and technological innovations (**Actions 20.1, 20.2, 20.3**)
- ⇒ Facilitate the access to treatment innovations and early phase trials (chemotherapy/surgery) (**Actions 1.3, 21.1, 21.2, 21.3**)
- ⇒ Improve the access to screening, diagnostic and surveillance (**Actions 21.2, 21.4**)



The CGE Clinician Committee (COCLIN)

- Established in 2006
- Focus on translational research with local/regional interactions
- Transfer between basic and clinical research
- Implementation of protocols for early phase I and II
 - ⇒ **Attractivity and visibility of clinical research protocols of CGE investigators**
 - ⇒ **Increase of patient inclusion rates**





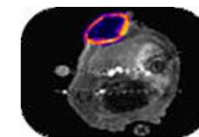
Structuring Clinical Research

- **Increasing granting** :16 PHRC granted over the 2007/2010 period (7 granted in 2010), Steady increase over the past 4 years
- **Increasing patient inclusion rates in clinical trials**

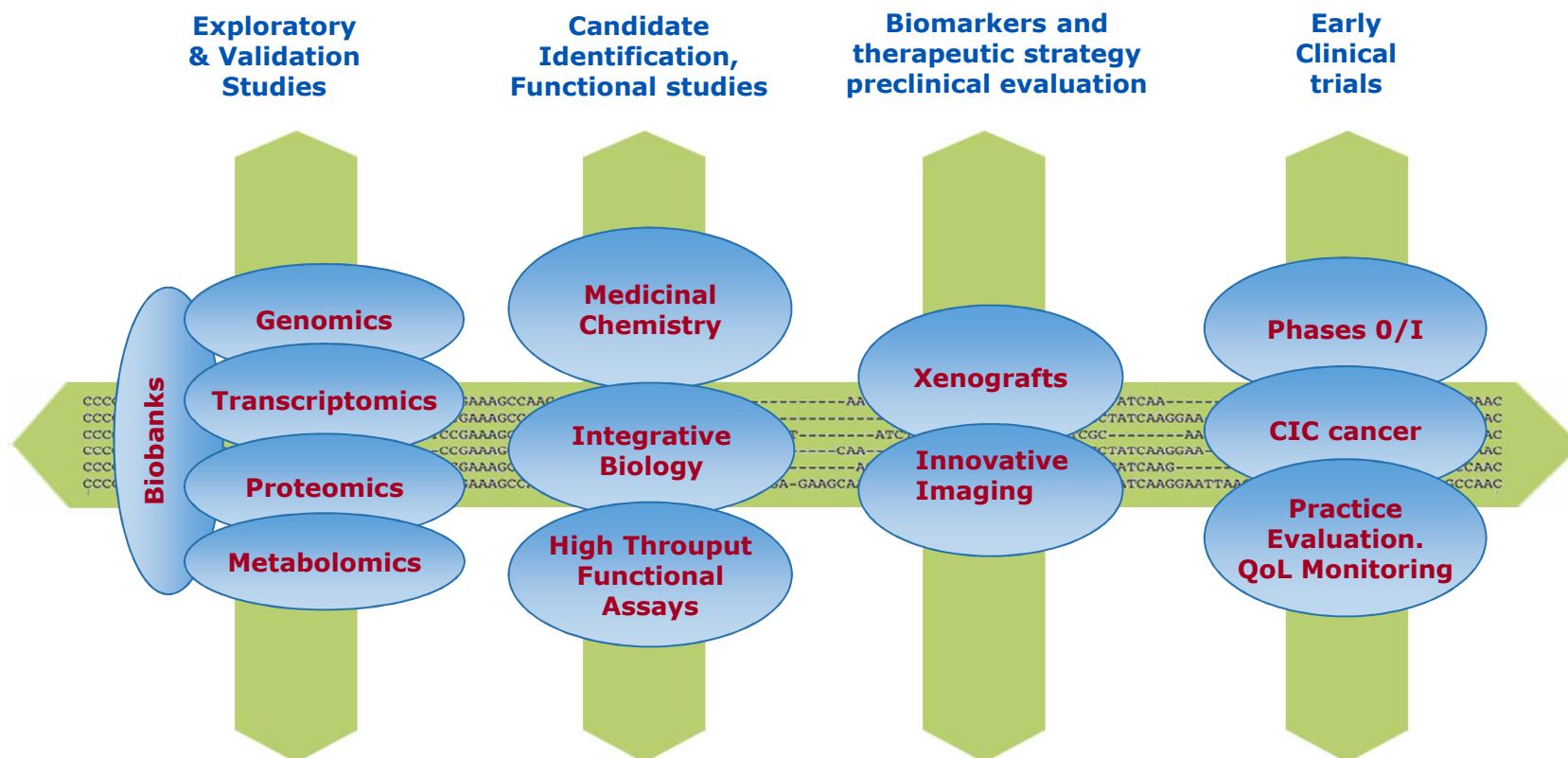
		2007	2008	2009	2010
France	Mean	9,66% ± 2,87	10,77% ± 3,02	13,29%	13.47%
	Extremes	3,24% -14%	3,17% -15,7%	6,28%- 18,25%	5.61%-24.95%
Eastern-France	Mean	5,88%	8,40%	13,66%	13.31%
	Individual rates	3,24% - 4,19% - 6,37% - 9,76%	3,17% - 8,77% - 10,43% -11,24%	7,98% - 13,71% - 14,67% - 18,25%	5.61% -11.72%- 13.08%-22.82%

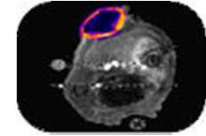
National ranking (2010): CLCC Dijon 3rd, CLCC Nancy 9th

- **Early Phase (I/IIa) clinical research units**
Dijon (CGFL), accredited as a **CLIP2 (Early Phase Investigation Centers)** by INCa in 2010
Nancy (CIC Oncology CHU/CAV)
- **Investissements d'avenir « Equipex »**
IMAPPI (functional and multimodal imaging, Dijon) 7.3 M€



**Plugging technological expertises for
clinical studies of higher impact**





Biobank workgroup

➤ **Context**

- A **network of regional biobanks** supported by INCa
- Involvement in local, national and European projects (eg BBMRI)
- **Data management:**
 - Industry standard compliant Databiotec software
 - Clinical annotations comprising the 40-item set defined by INCa (National Virtual Tumorbank)
- **Shared collections** : head & neck cancers, colorectal cancers, breast cancers, lymphoma, urogenital cancers, mesothelioma and sarcoma



➤ **Workgroup meetings**

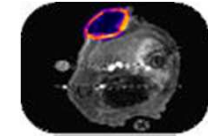
- **Heads of biobanks** → overall orientations of the network (mutualised or concerted investments, priority collections, expert identification, ...)
- **Technical staff** → practical questions (quality policy, sample qualifications, ethical issues, ...)

➤ **Building a virtual histopathology hub**

Implement advanced **high-throughput scanning technologies** and data transfer networks, access via a common portal

- ⇒ **share patient or model files** aggregating pathologic, biologic and clinical data
- ⇒ **build an image database** (archiving, training...)

Recruitment of a project manager supported by CGE



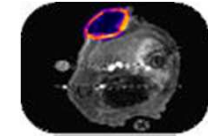
Prognostic and predictive factors, novel biomarkers and therapies

➤ **Integrated approaches for biomarker discovery and validation**

- Molecular profiling of tumours ← **Genomic, proteomic, metabolomic molecular platforms**
- Mechanistic studies using cellular and animal models ← **Xenografts and basic research laboratories**
- Circulating cells and proteome profiling in the course of treatment ← **Nancytomics, Clipp**
- Functional imaging approaches ← **Pharmimage, Nancyclotep**

➤ **Ongoing projects**

- Signalling cascades activation status monitoring in breast cancers (Nancy, Dijon), head and neck cancers (Nancy), colorectal cancer (Nancy)
- Cancer metabolotheque (Strasbourg)
- Clinical validation of new cell surface markers in chronic B-cell malignancies (Strasbourg)
- Molecular probes for imaging (Dijon)



ONCOTRANS meetings

- Bi-yearly meeting focusing on translational research
- Invitation of lecturers from collaborating centers in France and in neighbouring countries
- Sessions covering all aspects of translational research
 « from bench to bedside and from bedside to bench »
- Exchange platform between researchers and clinicians
- Abstract publication

